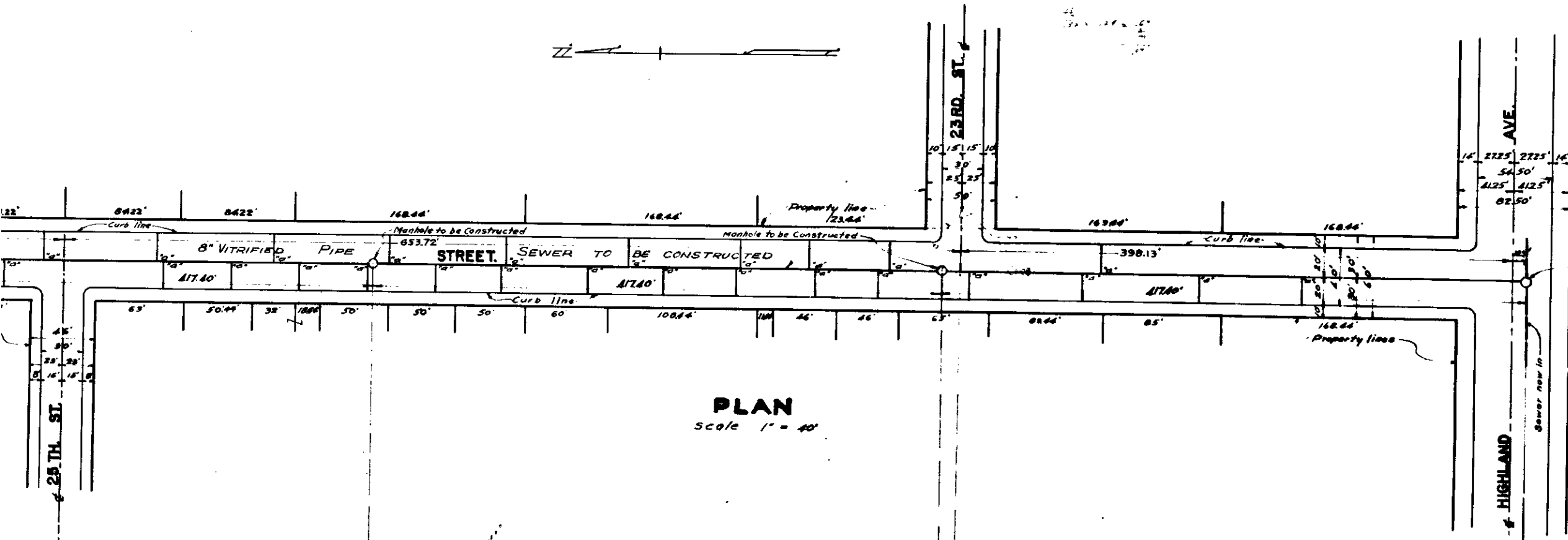


SHEET NO. 1
 PLAN NO. 1703
 FOR
LE ROY STREET SEWER
 FROM
 HIGHLAND AVE. TO NORTHLINE SAN BERNARDINO RAN.
 CITY OF SAN BERNARDINO
 CALIFORNIA

JULY 1947

RAYMOND D. FORSYTH
 Acting City Engineer

PLAN ADOPTED
 October 30, 1947



PLAN
 scale 1" = 40'

Note: All vitrified pipe connecting sewer shall be constructed on an upward grade of two per cent from the main sewer and shall extend from the main sewer to the curb line, and shall be at right angles to the main sewer.

-LEGEND-

ft. means feet or inches.
 ft. means feet or foot.
 No. means number.
 C. means center line.
 E. means Elevation.
 8" Vitrified Pipe Sewer to be constructed, shown thus: ————
 8" Vitrified Pipe Sewer to be reconstructed, shown thus: - - - - -
 8" Vitrified Pipe Sewer to be reconstructed, shown thus: - - - - -
 Manholes to be constructed, shown thus: ○
 Manhole now in place, shown thus: ○
 8" Vitrified Pipe Sewer now in, shown thus: ————

St. means Street.
 Ave. means Avenue.
 Blvd. means Boulevard.

SEWER DETAIL

Lineal ft. of 8" Vitrified Pipe Sewer to be constructed. ———— 166.84
 Lineal ft. of 8" Vitrified Pipe Sewer to be reconstructed. ———— 500.00
 No. of 8" Vitrified Pipes with 4" Connecting Sewers to be constructed. ———— 43
 No. of Manholes to be constructed. ———— 5

TITLE TO STREETS

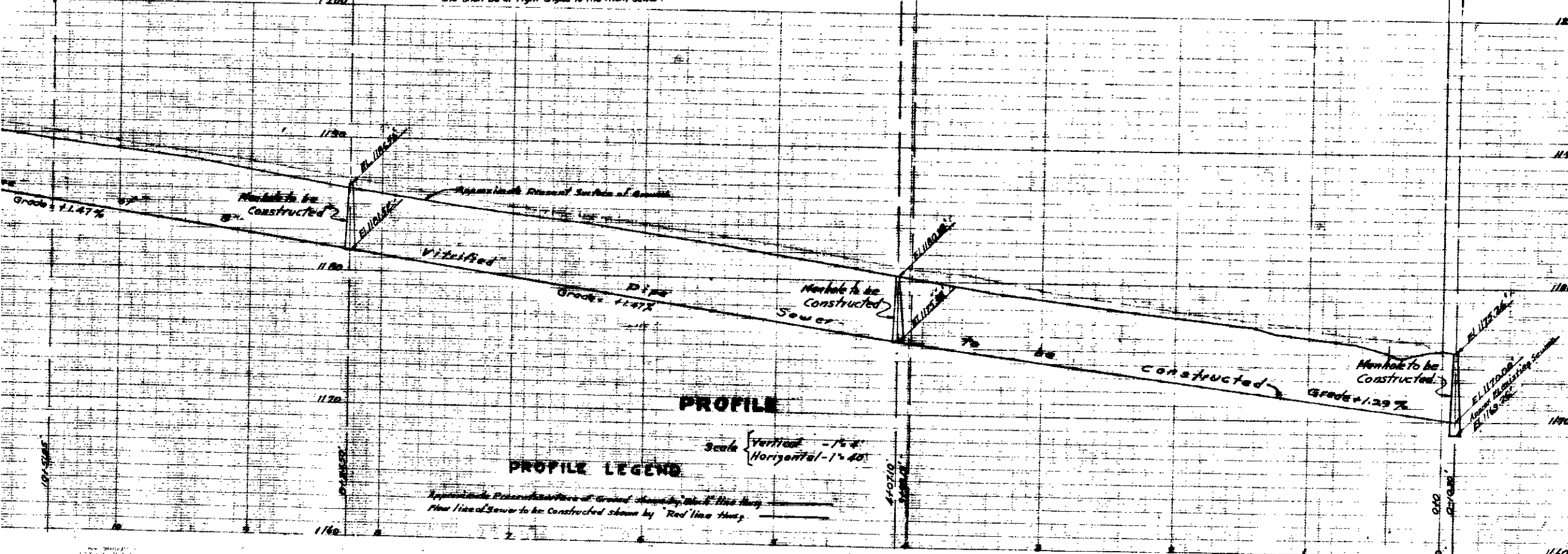
LE ROY STREET was dedicated to the City of San Bernardino (as LE ROY AVENUE) by Map of the ARROWHEAD HEIGHTS TRACT Recorded in Book 19, Page 5 records of San Bernardino County, California. Name changed to LE ROY STREET, Resolution No. 1373.

GRADE RESOLUTION

Grade of LE ROY STREET established by Resolution No. 1365 of the City of San Bernardino, California.

DATUM

All elevations shown in "feet" are in feet and are above a plane which is 1942.78 feet below the City Bench Mark as established by Ordinance 103 of the City of San Bernardino, California.



PROFILE
 scale Vertical - 1" = 4'
 Horizontal - 1" = 40'

PROFILE LEGEND

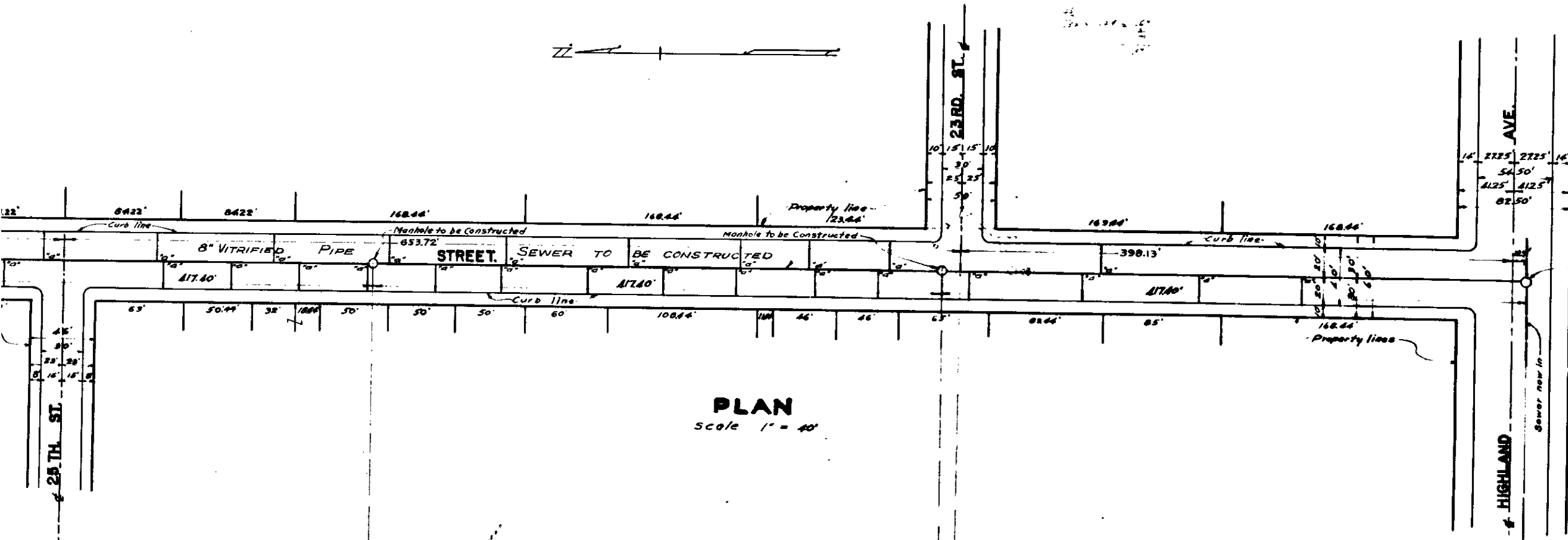
Approximate Present Surface of Ground, shown by Black line thus: - - - - -
 Floor Line of Sewer to be constructed, shown by Red line thus: ————

SHEET NO. 1
 PLAN NO. 1703
 FOR
LE ROY STREET SEWER
 FROM
 HIGHLAND AVE. TO NORTHLINE SAN BERNARDINO RAN.
 CITY OF SAN BERNARDINO
 CALIFORNIA

JULY 1947

RAYMOND D. FORSYTH
 Acting City Engineer

PLAN ADOPTED
 October 20, 1947



Note: All vitrified pipe connecting sewer shall be constructed on an upward grade of two per cent from the main sewer and shall extend from the main sewer to the curb line, and shall be at right angles to the main sewer.

-LEGEND-

St means Street
 Ave means Avenue
 Blvd means Boulevard

or in means inch or inches
 or ft. means feet or feet
 No. means number
 C. means Center Line
 E. means Elevation

8" Vitrified Pipe Sewer to be constructed, shown thus
 8" Vitrified Pipe Sewer to be constructed, shown thus
 Manhole to be constructed, shown thus
 Manhole now in show thus
 8" Vitrified Pipe Sewer now in, shown thus

SEWER DETAIL

Lineal ft. of 8" Vitrified Pipe Sewer to be constructed 166.84
 Lineal ft. of 4" Vitrified Pipe Sewer to be constructed 500.00
 No. of 8" x 4" Pipes with 4" Connecting Sewers to be constructed 43
 No. of Manholes to be constructed 5

TITLE TO STREETS

LE ROY STREET was dedicated to the City of San Bernardino (as LE ROY AVENUE) by Map of the ARROWHEAD HEIGHTS TRACT Recorded in Book 19, Page 5 records of San Bernardino County, California. Name changed to LE ROY STREET, Resolution No. 1373

GRADE RESOLUTION

Grade of LE ROY STREET established by Resolution No. 1365 of the City of San Bernardino, California

DATUM

All elevations shown in "feet" are in feet and are above a plane which is 1942.78 feet below the City Bench Mark as established by Ordinance 103 of the City of San Bernardino, California.

